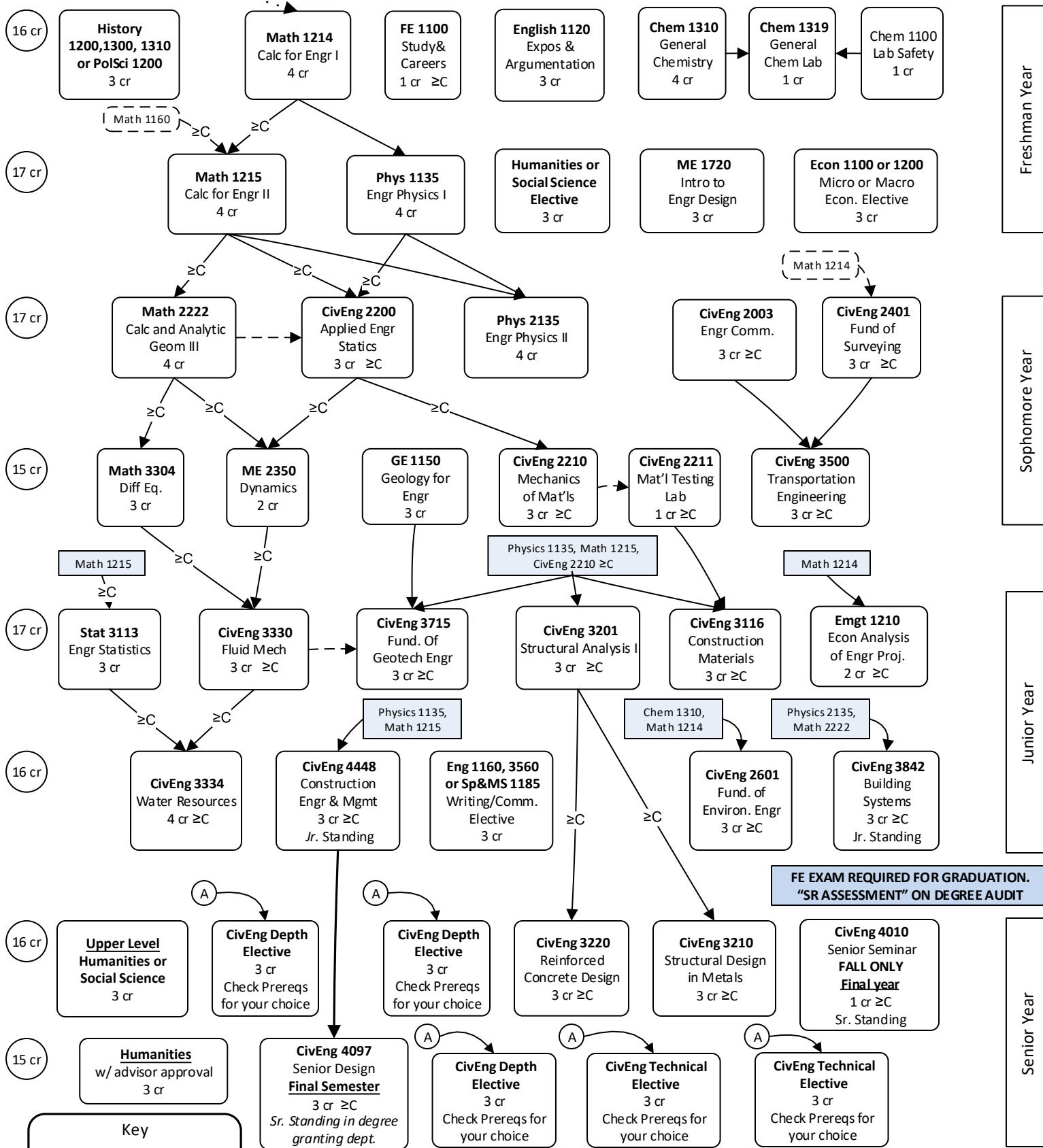


# Civil Engineering Curriculum, Fall 2022 Catalog Year and Later, Updated 07/01/2021

Based on the Math placement test, prerequisites of Math 1120, 1130, 1140, and/or 1160 may be required

All students are required to complete an Experiential Learning activity prior to graduation.

Name: \_\_\_\_\_



This flowchart is designed to ASSIST in advising and course selection. Refer to current catalog for up to date requirements and refer to degree audit/CAPS for official progress.

